

## PartsList DW745 TABLESAW 4

Item	PartNumber	Qty	PartDescription	GeneralDescription	OtherInfo	RepairInst	Markets
1	5140034-41		GUARDSA				
2	1004549-04		ORING				
4	5140032-02	6	PIN				
5	5140032-03	6	NUTM6	No			
6	5140117-75	1	RAIL	No			
7	5140032-05	4	SCREWM4X8	No			
8	1004549-00	2	SCREW.SPECIAL	No			
9	5140032-07	1	POINTER	No			
10	5140032-08	4	CAP	No			
11	1002765-00	8	SCREW.SPECIAL	M5X16W/WASHER	No		
12	1004696-30	1	SCALE METRIC	No			
13	5140032-10	2	RAIL	No			
14	1004696-29	1	TABLE	No			
15	5140117-76	1	RAILREAR	No			
16	5140032-13	7	NUTM5	No			
17	1002766-00	1	PIN 4X18	No			
18	5140032-15	6	WASHERM8	No			
19	5140032-16	1	SPRING	No			
20	5140032-17	1	ADJUSTER	No			
21	5140034-48	1	SHAFTSA	No			
22	5140032-19	1	BUSHING	No			
23	5140032-20	1	SHAFT	No			
24	5140032-21	2	PIN	No			
25	5140032-22	1	SCREWM5X25	No			
26	5140032-23	1	LEVERLOCK	No			
27	5140032-24	5	WASHERM6	No			
28	5140032-25	1	NUTM6	No			
29	429989-57 7		NUT M8X1.25	No			
30	5140034-49	1	SHAFTSA	No			
31	429901-00 3		LOCKNUT				
32	5140032-27	3	WASHERM10				
33	5140032-28	1	FENCEKNOB				

## PartsList DW745 TABLESAW 4

Item	PartNumber	Qty	PartDescription	GeneralDescription	OtherInfo	RepairInst	Markets
34	5140032-29	2	PINIONGEAR				
35	1002767-00	4	SCREW.SPECIAL	M5			
36	5140032-31	2	BRACKET				
37	5140118-01	2	GUARD				
38	5140032-33	2	LOCKINGRING	No			
39	5140032-34	2	PIN 4X16	No			
40	5140034-50	1	ROD	No			
41	5140032-36	2	BEARINGBLOCK	No			
42	5140032-37	2	SPRING	No			
43	5140034-51	1	SCREWM8X1.25PX16HEX	No			
44	5140118-02	1	COVER	No			
45	5140118-03	1	LOCKPIN	No			
46	5140032-41	1	LEAFSPRING	No			
47	5140118-04	1	BASE	No			
48	1004696-32	1	PLATE	No			
49	1002769-00	4	SCREW.SPECIAL	M6WITHWASHER	No		
50	5140032-45	2	SPACER	No			
51	1004696-31	3	SCREWM5X2WWASHER	No			
52	1002782-00	2	SCREWM5X12	No			
53	1004549-07	1	WHEELSA	No			
54	5140032-49	1	SHAFT	No			
55	5140032-50	2	KEY 4X4X8	No			
56	5140118-05	1	BEVELGEAR	No			
57	5140032-52	2	RING	No			
58	429898-00 1	NUT	M8X1.25P	No			
59	1002773-00	1	SCREW.SPECIAL	M5X10WWASHER	No		
60	5140118-06	1	LOCKHANDLE	No			
61	5140061-66	1	CORDCLAMP	No			
62	5140032-57	2	WASHERLOCK M10	No			
63	5140032-58	1	INDICATOR	No			
64	1002774-00	1	RING				
65	1002775-00	4	SCREW.SPECIAL	M5X10			

## PartsList DW745 TABLESAW 4

Item	PartNumber	Qty	PartDescription	GeneralDescription	OtherInfo	RepairInst	Markets
66	5140032-60	1	TRUNION				
67	1002776-00	4	SCREW.SPECIAL				
68	5140118-07		SHROUD				
69	1002778-00		WASHERPLASTIC	10.5X32X1.5			
70	5140118-08		GUARDREAR				
71	5140032-65	1	BRACKET	No			
72	1002779-00	2	SCREW.SPECIAL	M5	No		
73	1004696-33	4	SCREW.SPECIAL	No			
74	5140118-09	1	SHROUD	No			
76	1004696-34	1	WASHEROUTERCLAMP	No			
77	429989-94	1	NUT	No			
78	5140032-70	1	WASHER	M5X1.5	No		
79	5140118-10	1	SCREW	No			
80	5140032-72	2	WASHERTHRUST	M10	No		
81	5140032-73	1	BLOCK	No			
82	5140118-11	1	SHAFT	No			
83	5140032-75	1	WASHERBOW	No			
84	5140118-12	1	SHAFT	No			
85	5140032-77	4	PLATE	No			
86	1004696-25	1	MITREFENCE	No			
87	5140032-79	1	PANELLH	No			
89	5140032-80	10	SCREWM5X12	No			
90	1002783-00	8	SCREW.SPECIAL	M4X8	No		
92	5140032-83	4	SCREW	No			
93	5140032-84	4	BUMPER	No			
94	5140032-85	4	PLATE	No			
95	5140118-13	1	CAGE	No			
96	5140032-87	2	FEET	No			
97	5140032-88	2	SCREWM8X45	No			
98	5140032-89	2	FEET	No			
100	1004549-05	1	PANELRH			No	
102	1002789-00	1	WRENCHSPECIAL				

## PartsList DW745 TABLESAW 4

Item	PartNumber	Qty	PartDescription	GeneralDescription	OtherInfo	RepairInst	Markets
103	1002790-00	1	WRENCHSPECIAL				
104	5140032-95	1	WINGNUT	M10			
105	1002791-00	4	SCREWM4X16				

## PartsList DW745 TABLESAW 4

Item	PartNumber	Qty	PartDescription	GeneralDescription	OtherInfo	RepairInst	Markets
106	5140034-55		SWITCHCOVER				
107	1004697-35		PANELFRONT				
108	1004695-88		CORDSET(M/PLUG)GB GB GB	108 1004695-89 1 CORDSET LX	No LX	109 1004696-35 1 SWITCHSA230V	
			No GB 109 1004696-36 1 SWITCHSA 120V	No LX			
110	1004696-06	1	LEADWIRE		No		
111	1004696-07	1	LEADWIRE		No		
112	5140034-59	1	SWITCHBOX		No		
113	429991-43	2	GROMMET		No		
114	5140033-04	2	WASHER		No		
115	5140033-05	1	SUPPORTPLATE		No		
116	1004696-37	1	SWITCH	230V	No	GB	
116	1004696-38	1	SWITCH	110V	No	LX	
117	1004696-39	1	CIRCUITBREAKER	230V	No GB	117 1004696-40 1 CIRCUITBREAKER 110V	No LX 118 1004696-05 1
			PCB 110V-220V	No GB			
118	1004696-05	1	PCB	110V-220V	No	LX	
119	1004549-08	1	LEADSA		No		
120	1002797-00	2	SCREWM6X16		No		
121	5140033-38	4	WASHER	M6	No		
122	5140033-39	6	SCREWM5X8		No		
123	5140033-40	4	DOWEL		No		
124	5140034-65	1	COVER		No		
126	5140034-66	1	PLATE			No	
128	5140034-68	1	GUARD		No		
129	1004695-90	1	DUSTPORT		No		
130	5140034-70	1	PANEL.REAR		No		
132	1004549-02	1	PLATE		No		
133	5140034-72	1	COVER				
134	5140033-44	1	PUSHROD				
135	5140034-73	1	LOCKNUT				
136	1002798-00	1	SCREWM6X8				
137	5140033-42		WASHER	M12			
138	5140034-74		SHAFT				

## PartsList DW745 TABLESAW 4

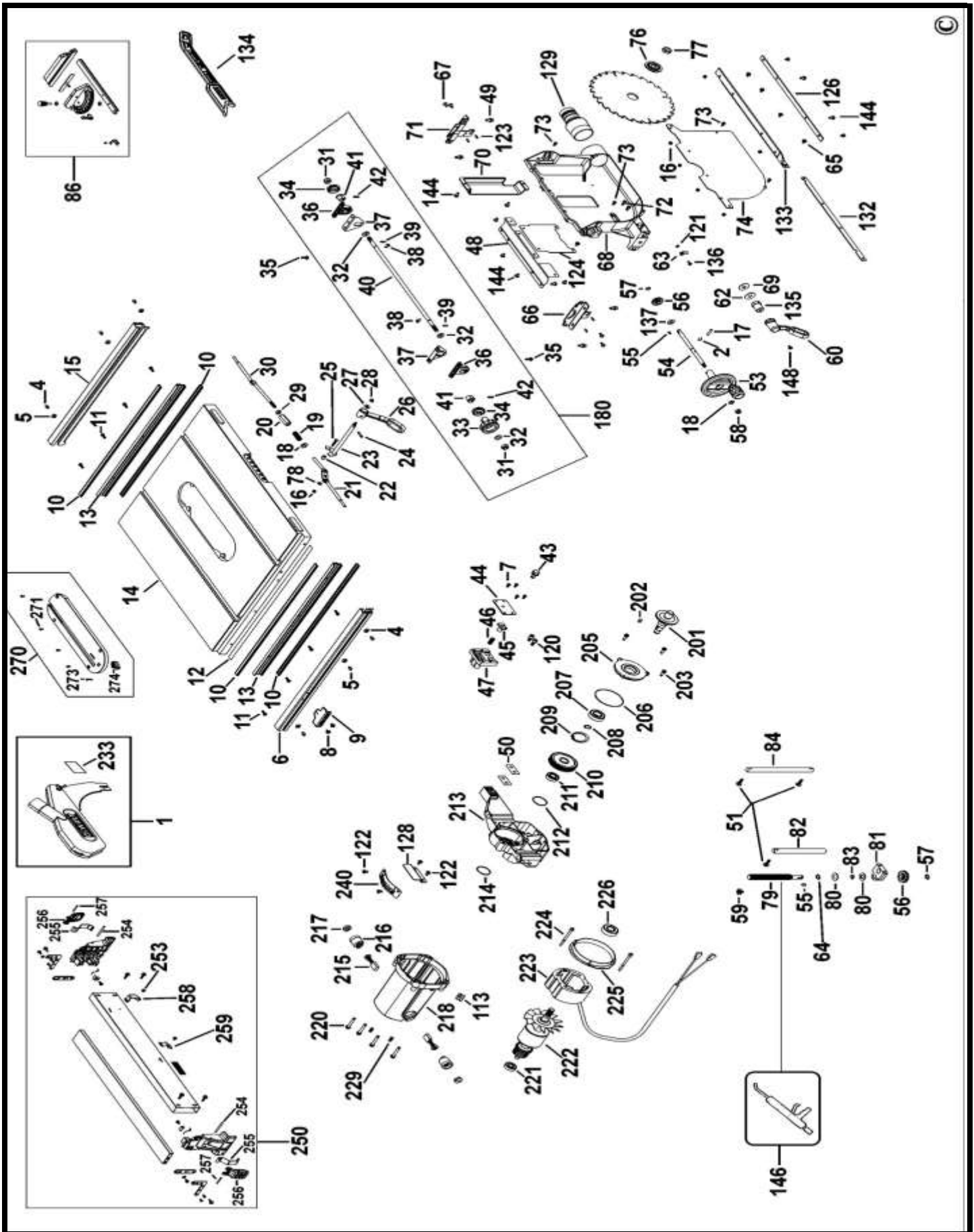
Item	PartNumber	Qty	PartDescription	GeneralDescription	OtherInfo	RepairInst	Markets
139	5140034-75		SPRING				
140	5140034-76	1	PLATE	No			
141	5140034-77	1	PLATE	No			
142	1002799-00	2	SCREWM6	No			
143	5140034-79	1	PLATELOCK	No			
144	5140061-77	28	SCREW.SPECIAL	M5X0.8X14WWASH	No		
145	1002801-00	2	WASHERLOCK	No			
146	583534-00 2		GREASE50GMSRheolube380G1	No			
148	1002804-00	1	SCREW	M5X10		No	
157	1002772-00	1	CORDPROTECTOR			No	
180	1004549-06	1	RODSA			No	
201	5140103-68	1	ARBOR	No			
202	5140010-15	1	KEY 5X5X10	No			
203	1002765-00	3	SCREW.SPECIAL	M5X16W/WASHER	No		
205	5140033-10	1	GEARCASECOVER	No			
206	5140033-11	1	ORING	No			
207	1004695-91	1	BEARING	6003	No		
208	5140033-13	1	RING	No			
209	5140010-11	1	RETAINER	No			
210	5140033-14	1	GEAR 57T	No GB 210 5140134-97	1	GEAR 54T	No LX
211	1004695-92	1	BEARING	6001	No		
212	5140033-16	1	ORING	No			
213	1004683-44	1	GEARCASE	EURO	No		
214	5140033-18	1	ORING	No			
215	1002805-00	2	BRUSH230V	220-240V	No	GB	
215	1002806-00	2	BRUSH115-120V	110-120V	No	LX	
216	5140033-20	2	BRUSHHOLDER				
217	5140033-21	2	BRUSHCAP				
218	5140033-22	1	FIELDCASE				
220	5140134-99	4	SCREW.SPECIAL	M5X0.8X35WWASH			
221	5140117-81		BEARING				

## PartsList DW745 TABLESAW 4

Item	PartNumber	Qty	PartDescription	GeneralDescription	OtherInfo	RepairInst	Markets
222	1002807-00		ARMATURE220/240V				GB
222	1004695-93		ARMATURE115/120V				LX
223	1002809-00	1	FIELD220/240V			No	GB
223	1002810-00	1	FIELD115V	110-120V		No	LX
224	5140135-02	2	SCREW			No	
225	5140033-29	1	BUFFER			No	GB
225	1004695-95	1	BUFFER			No	LX
226	5140118-21	1	BEARING			No	
229	5140011-87	2	SCREW			No	
231	5140033-31	1	BEVELSCALE			No	
232	5140033-32	1	LABEL			No	
233	1002815-00	1	WARNINGLABEL			No	
235	N312061	1	RATINGPLATE	GB		No	GB
235	N312060	1	RATINGPLATE	LX		No	LX
240	1004696-28	1	PLATE			No	
250	1004696-27	1	FENCESA	24.5"		No	
253	5140134-61	2	SCREW	M4X0.7PX8		No	
254	5140134-58	2	PIN	4X45		No	
255	5140134-57	2	SPRING			No	
256	5140134-56	1	PADDLE			No	
257	1004696-26	2	PIN			No	
258	5140134-62	1	STRAP			No	
259	5140134-60	1	CLIP			No	
270	5140034-46	1	TABLEINSERT			No	
271	5140033-53	4	SCREW	M4X8SELFTAP		No	
273	5140033-54	1	SCREW	M4X16SELFTAP		No	
274	5140033-55	1	CAM			No	

# PartsList DW745 TABLESAW 4

Item PartNumber Qty PartDescription GeneralDescription OtherInfo RepairInst Markets





# PartsList DW745 TABLESAW 4

Item PartNumber Qty PartDescription GeneralDescription OtherInfo RepairInst Markets

